

Tutorial for the I7500

Be sure to have a backup of the data on your phone!
Flashing a phone is a tricky business so be sure to know the risks!

What do you need for installation:

- The desired firmware
- The Multiloader application
- The Samsung I7500 USB-cable
- The I7500

Preparation:

- 1) Firmware
- 2) Odin MultiLoader 3.95
- 3) Samsung I7500 USB cable
- 1) How to get you phone into firmware mode:



Picture 1. Download Mode.

FW-List G-I-J-L-M

The application that will flash the new firmware to your mobile.

[Odin Multiloader v3.95](#)

Original cable.

Press and hold the following buttons.

(Picture. 1):

- (1) Volume down
- (2) OK button.
- (3) Power button.

Turn of your phone

Remove your MicroSD and SIM card, put the battery back in

- 5) Connect your phone with your pc.
- 6) Before you start do a hard reset.

Use the original USB cable 🍌
Enter the following code: *2767*3855#

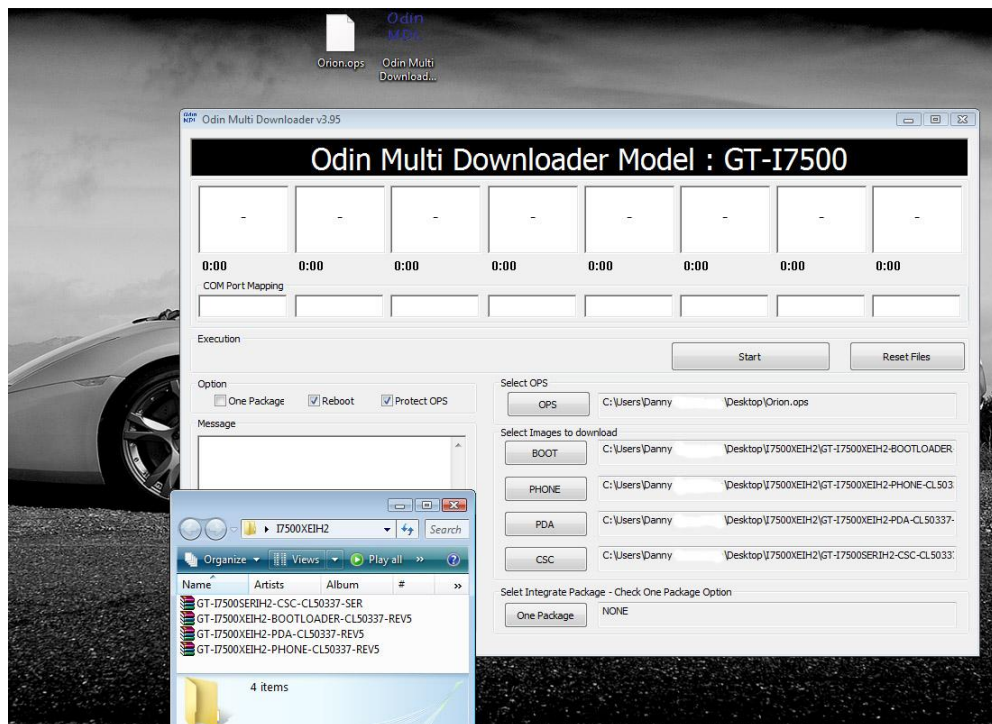
Flashing:

- 1) Open the MultiLoader.
- 2) Extract the firmware onto your desktop.
- 3) Go back to the Multiloader
- 4) Click on OPS and go to the orion.ops file.
- 5) Click on Boot and go to
- 6) Click on Phone and go to
- 7) Click on PDA and go to
- 8) Click on CSC and go to
- 8) Connect your phone in firmware mode
- 9) Click on Start
- 10) Leave your phone connected during the entire firmware installation.
- 11) Turn on your phone, enter your PIN code. Your phone is now updated! .

GT-I7500SERIH2-CSC-CL50337-SER
 GT-I7500XEIH2-BOOTLOADER-CL50337-REV5
 GT-I7500XEIH2-PDA-CL50337-REV5
 GT-I7500XEIH2-PHONE-CL50337-REV5
 Download mode

Remove battery. Insert battery.

Flash is succesfully completed.



Picture 2. Example picture Samsung I7500.